



HS2

CUSTOMZABLE CONTROLLER FOR ELECTRIC TOWEL RAILS

Analogue controller

Overview



Main features

- Ambient temperature control
- Desired temperature setting
- Frost-protection

Application

- Electric towel rails

Benefits

- **Sober and simple style:** the controller fits in harmoniously with the towel rails style
- **Customizable** thanks to the decorative sleeve
- **Practical:** the product has a small footprint
- **Ergonomic settings** using the rotary knob
- **Easy to use**
- **Integrated temperature sensor which cannot be accessed from the outside :** the product is more resistant during shipment and when you are installing it

Functional specifications

Use



Desired temperature	Adjustable from +5°C to +30°C with visible confort range (approximately +20°C)
Frost-protection	+5°C approximately, "click" effect between Frost protection/variable setpoint zones on the setpoint scale
Safety	Integrated water-removal system
Led status	Viewing of heating

Installation

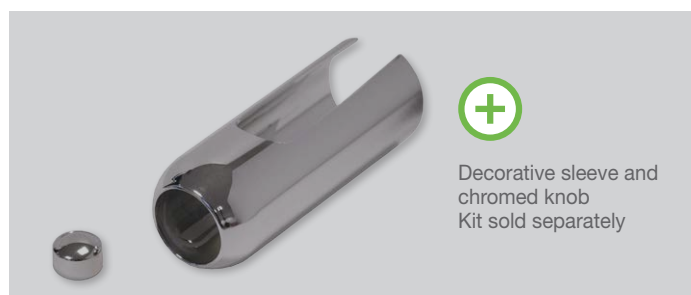
Compatible with all types of electric heating bodies

Connection to the heating electric cartridge by faston

- Controller assembly directly on the towel rails
- Mounting on the left or right towel rails manifold

Decorative sleeve and chromed knob Kit sold separately

Sealing Supplied o'ring to be fitted on the heating cartridge



Technical specifications

Dimensional and finish specifications

Height	130 mm	
Diameter	49 mm	
Color	White	Grey
Net weight	0,18 Kg	

Power supply

Operating voltage	220V-240V +/-10% 50Hz
Maximum power	1500 W, resistive load
Power cord	- 800 mm, 2 conductors - 1100 mm, 3 conductors

Control

Control type	ON/OFF with hysteresis.
--------------	-------------------------

Environment

Protection rating	IP44 after installation under the responsibility of the integrator
Class	Class II, after installation under the responsibility of the integrator (all models except BXDHS002A1A, BXDHS002A1SCA, BXDHS002A1GA and BXDHS002A1SCGA which are Class I)
Operating temperature	0°C to +50°C
Desired temperature setting	+5°C to +30°C approx.
Storage temperature	-20°C to +70°C
NTC electronic temperature sensor	

Applicable directives

EMC	2014/30/EU
LVD	2014/35/EU
RoHS	2011/65/EU

Applicable standards

EMC	EN55014-1 ; EN55014-2 ; EN61000-3-2 ; EN61000-3-3
LVD	EN60335-1 ; EN60335-2-30 ; EN60335-2-43 ; EN62233
RoHS	EN50581
Manufacturing	On certified site ISO 9001 V2008

Product codes

Codes	Descriptions
BXDHS002A2A	White analogue controller for towel rails, CLII, 800mm power cord
BXDHS002A2GA	Grey analogue controller for towel rails, CLII, 800mm power cord
BXDHS002A1A	White analogue controller for towel rails, CLI, 1100mm power cord
BXDHS002A1GA	Grey analogue controller for towel rails, CLI, 1100mm power cord
BXDHS002A1SCA	White analogue controller for towel rails, CLI, 1100mm schuko (French) plug
BXDHS002A1SCGA	Grey analogue controller for towel rails, CLI, 1100mm schuko (French) plug
BXDHS002A2PEIA	White analogue controller for towel rails, CLII, IRAM 800mm power cord
BXDLSBUCA	Decorative sleeve and chromed knob

Product customization (style, features) possible on request. Please contact us.