



THE1

## CUSTOMIZABLE CONTROL UNIT FOR AN ELECTRIC TOWEL HEATERS

Analog control with Boost feature, with sound signals of power on/heating on standby



### Overview

#### Main features

- Room temperature control
- Power on/heating on standby function with sound signals
- Heating On/Off
- Desired temperature setting
- Quick heating of your bathroom using the Boost feature
- Remote programming by means of a 6-order pilot wire

#### Application

- Electric towel heaters with heat-transfer fluid

#### Product + points

- **Customizable front cover**
- **Easier packing** : 30 mm thickness, makes the packaging of the towel heaters easier
- **An incorporated temperature sensor, which cannot be accessed from the outside**: the product is more resistant when you're installing it
- **Robust**: the triac and the relay zero crossing switching system optimize product life time
- **High-precision electronic PID (Proportional Integrated Derivative) temperature regulation**

## Functional specifications

### Use



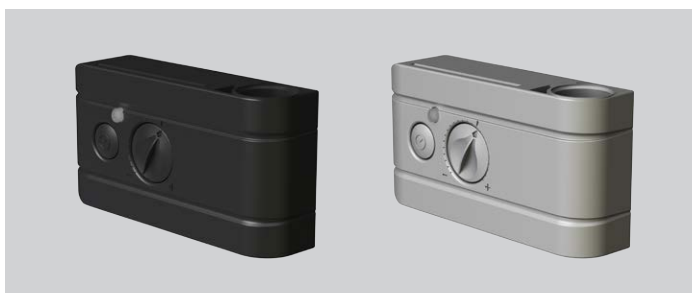
<b>Heating on/off</b>	
<b>Desired temperature</b>	Adjustable from +7°C to +30°C with visible comfort range (approximately 21°C)
<b>Boost feature</b>	Temperature is set to the maximum limit during 2 hours
<b>Safety</b>	<ul style="list-style-type: none"> <li>- <b>Room overheating</b> is prevented in Boost mode</li> <li>- <b>Internal protection against overheating faults by thermofuse</b></li> <li>- <b>Protection mode activated</b> in case of faulty detection</li> <li>- <b>Settings are saved by means of EEPROM</b> in the event of a power supply voltage outage</li> </ul>
<b>Pilot lights</b>	Viewing of resistance engaged, voltage presence, boost running and protection mode running
<b>Help for the visually impaired</b>	<ul style="list-style-type: none"> <li>- <b>One specific sound signal</b> for Stand by mode activation, another specific signal for Auto mode activation</li> <li>- <b>Landmarks relief</b>: Auto, Standby heating, +, -, graduations and Comfort set point range</li> </ul>

### Installation

Compatible with all types of electric heating bodies

The control unit can be connected quickly and easily to a mains power supply using the faston lugs

**Sealing** Joint to be fit to the supplied cartridge heater



# Technical specifications

## Dimensional and finish specifications

Height	66 mm		
Width	130 mm		
Depth	30 mm		
Color	White RAL 9016	Grey RAL 9006	Black RAL 9005
Net weight	0.2 Kg		

## Power supply

Operating voltage	230V +/-10% 50Hz
Maximum power	2000W, resistive load
Power cord	800 mm

## Control

Control type	PID
--------------	-----

## Environment

Protection rating	IP44 after installation under the responsibility of the integrator
Class	Class II, after installation under the responsibility of the integrator
Operating temperature	0°C to +50°C
Desired temperature setting	From +7°C to +30°C approx.
Storage temperature	-20°C to +70°C
NTC temperature sensor electronics	

## Applicable guidelines

EMC	2014/30/EU
LVD	2014/35/EU
RoHS	2011/65/EU

## Applicable standards

EMC	EN55014-1 ; EN55014-2 ; EN61000-3-2 ; EN61000-3-4
LVD	EN60335-1 ; EN60335-2-30 ; EN60335-2-43 ; EN62333
RoHS	EN50581
Manufacturing	On certified site ISO 9001 V2008

# Product codes

Codes	References
<b>BXATHE1A2C</b>	White analog controller for towel rails, Class II, without pilot wire and power cord 800mm, with sound signal
<b>BXBTHE1A2PC</b>	Grey analog controller for towel rails, Class II, with pilot wire and power cord 800mm, with sound signal
<b>BXATHE1A2PC</b>	White analog controller for towel rails, Class II, with pilot wire and power cord 800mm, with sound signal
<b>BXBTHE1A2PBC</b>	Black analog controller for towel rails, Class II, with pilot wire and power cord 800mm, with sound signal

## Compatible product(s) (sold separately)

Codes	References
<b>ACAFCTHE1C</b>	White decorative plate for THE01
<b>ACAFCTHE1GC</b>	Grey decorative plate for THE01

Product customization (design features) possible. Please contact us.