



THE1

CUSTOMIZABLE CONTROL UNIT FOR AN ELECTRIC TOWEL HEATERS

Analog control with Boost feature



Overview

Main features

- Room temperature control
- Desired temperature setting
- Quick heating of your bathroom using the Boost feature
- Remote programming by means of a 6-order pilot wire

Application

- Electric towel heaters with heat-transfer fluid

Product + points

- **Customizable front cover**
- **Easier packing** : 30 mm thickness, makes the packaging of the towel heaters easier
- **An incorporated temperature sensor, which cannot be accessed from the outside**: the product is more resistant when you're installing it
- **Robust**: the triac and the relay zero crossing switching system optimize product life time
- **High-precision electronic PID (Proportional Integrated Derivative) temperature regulation**

Functional specifications

Use



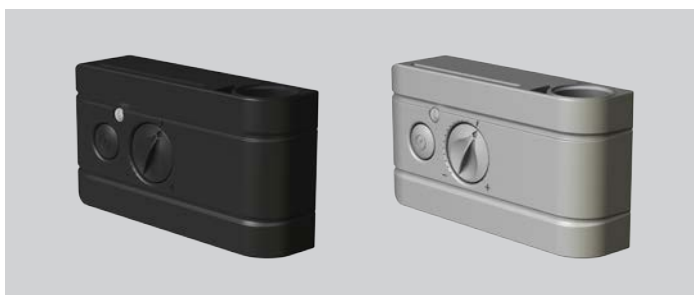
Heating on/off	
Desired temperature	Adjustable from +7°C to +30°C with visible comfort range (approximately 21°C)
Boost feature	Temperature is set to the maximum limit during 2 hours
Safety	<ul style="list-style-type: none"> - Room overheating is prevented in Boost mode - Internal protection against overheating faults by thermofuse - Protection mode activated in case of faulty detection - Settings are saved by means of EEPROM in the event of a power supply voltage outage
Pilot lights	Viewing of resistance engaged, voltage presence, boost running and protection mode running

Installation

Compatible with all types of electric heating bodies

The control unit can be connected quickly and easily to a mains power supply using the faston lugs

Sealing Joint to be fit to the supplied cartridge heater



Technical specifications

Dimensional and finish specifications

Height	66 mm		
Width	130 mm		
Depth	30 mm		
Color	White RAL 9016	Grey RAL 9006	Black RAL 9005
Net weight	0.2 Kg		

Power supply

Operating voltage	230V +/-10% 50Hz (120V +/- 10%, 60 Hz for BXATHE01USLC model)
Maximum power	2000W, resistive load (1200 W for BXATHE01USLC model)
Power cord	800mm (for BXATHE01USLC model)

Control

Control type	PID
--------------	-----

Environment

Protection rating	IP44 after installation under the responsibility of the integrator
Class	Class II, after installation under the responsibility of the integrator (Classe I for BXATHE01USLC model)
Operating temperature	0°C to +50°C
Desired temperature setting	From +7°C to +30°C approx.
Storage temperature	-20°C to +70°C
NTC temperature sensor electronics	

Applicable guidelines

EMC	2004/108/EC
LVD	2006/95/EC
RoHS	2011/65/EU

Applicable standards

EMC	EN55014-1 ; EN55014-2 ; EN61000-3-2 ; EN61000-3-4
LVD	EN60335-1 ; EN60335-2-30 ; EN60335-2-43 ; EN62333
RoHS	EN50581
Manufacturing	On certified site ISO 9001 V2008

Product codes

Codes	References
BXATHE1A2LC	White analogue controller for towel rails, Class II, without pilot wire and power cord 800mm, 2 knobs
BXATHE1A2PLC	White analogue controller for towel rails, Class II, with pilot wire and power cord 800mm, 2 knobs
BXBTHE1A2PLC	Grey analogue controller for towel rails, Class II, with pilot wire and power cord 800mm, 2 knobs
BXBTHE1A2BPLC	Grey analogue controller for towel rails, Class II, with pilot wire and power cord 800mm, 2 knobs
BXATHE1A1USLC	White analogue controller for towel rails, Class I, without pilot wire and power cord US version, 2 knobs

Compatible product(s) (sold separately)

Codes	References
ACAFCTHE1C	White decorative plate for THE01
ACAFCTHE1GC	Grey decorative plate for THE01

Product customization (design features) possible. Please contact us.