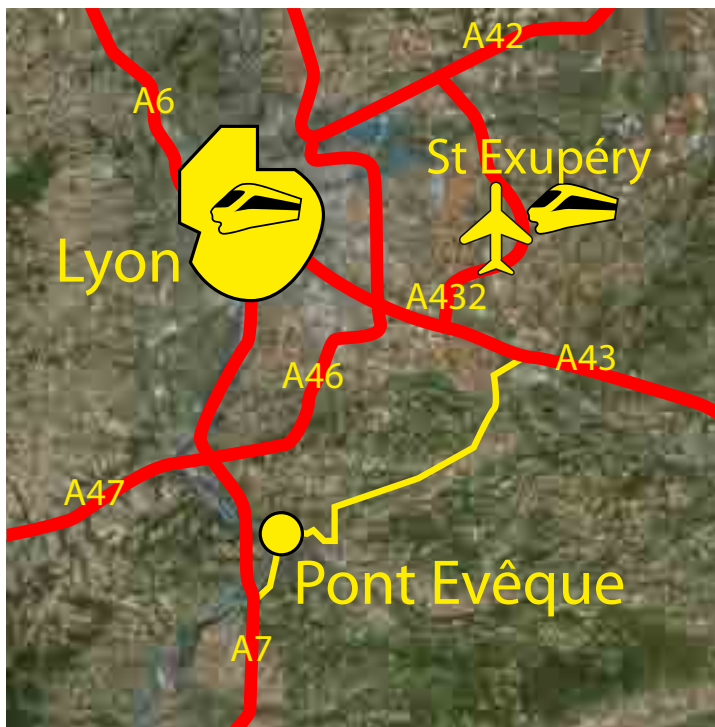


Imhotep Création – how to get here

GPS Co-ordinates
 45°52'45.7" North
 4°9'27.02" East

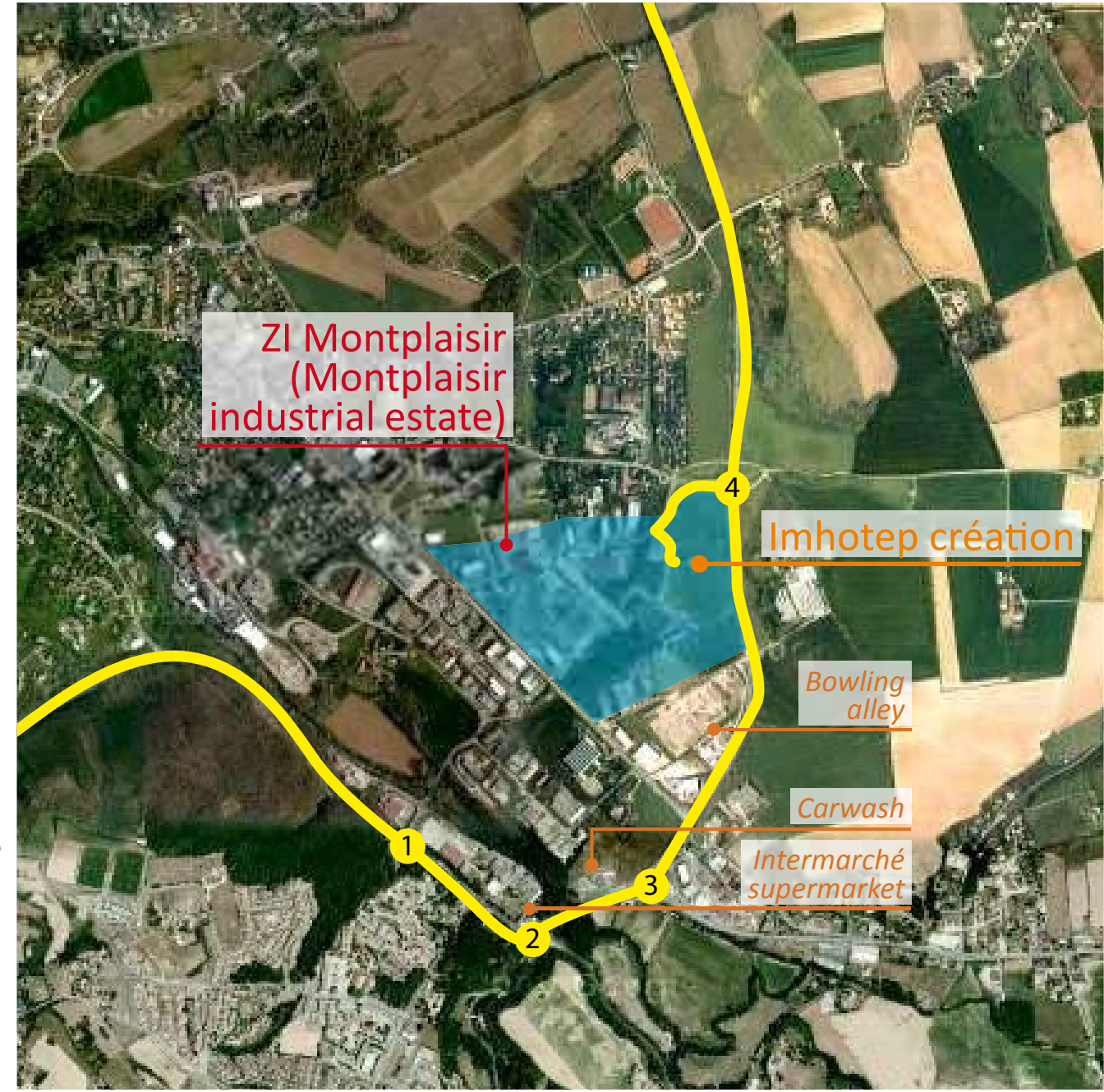


Imhotep création
 Z.I Montplaisir
 Rue du Champ de Courses
 38780 PONT EVEQUE
 TEL : 00 33 (0)4 74 58 39 56
 FAX : 00 33 (0)4 74 58 39 57
 E-MAIL : contact@imhotepcreation.com
 WEB : www.imhotepcreation.com

- > **From Lyon** on the **A7 motorway**, exit number **9**.
 Drive along beside the River Rhône and then enter Vienne.
 At the first bridge (beside the Ibis Hotel) go left following the signs for Grenoble for 2km.
 At the 1st roundabout (the roundabouts are numbered on the map, right), go straight ahead.
 At the 2nd roundabout, turn left.
 At the 3rd roundabout, go straight ahead.
 At the 4th roundabout, turn left – you have now entered the Montplaisir industrial estate.
- > **From Marseille** on the **A7 motorway**, exit number **11**.
 Drive along beside the River Rhône and then enter Vienne.
 At the second bridge (beside the Ibis Hotel) go right following the signs for Grenoble for 2km.
 At the 1st roundabout, go straight ahead.
 At the 2nd roundabout, turn left.
 At the 3rd roundabout, go straight ahead.
 At the 4th roundabout, turn left – you have now entered the Montplaisir industrial estate.
- > **From Lyon Saint Exupéry Airport** on the **A432 motorway**, exit number **5**.
 Follow the signs for Vienne and then those for “Pont-Evêque Centre” for 4km.
 At the 1st roundabout **4**, turn right – you have now entered the Montplaisir industrial estate.
- > **From Lyon, Grenoble & Chambéry** on the **A43 motorway**, exit number **5**.
 Follow the signs for Vienne and then those for “Pont-Evêque Centre” for 4km.
 At the 1st roundabout **4**, turn right – you have now entered the Montplaisir industrial estate.

Aerial view of Pont-Evêque:

From:
 Saint Exupéry Airport, Grenoble & Chambéry



From:
 Lyon & Marseille



Offices



Warehouses

Towards Saint Jean de Bournay



Customized and innovative temperature controls for home comfort